

# BUG & REPTILE MUSEUM SCAVENGER HUNT

Your Name \_\_\_\_\_

1) What colors are the Tiger Salamander? \_\_\_\_\_

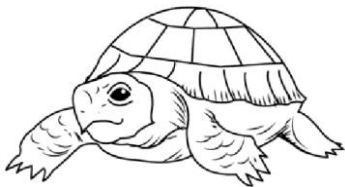
2) What continent do Bearded Dragons come from? \_\_\_\_\_

3) What color is Blooper's tongue \_\_\_\_\_

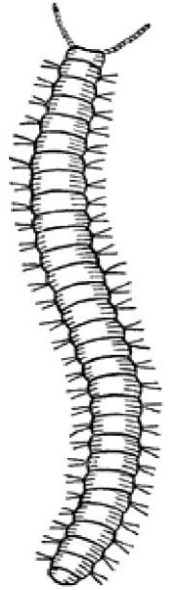
4) What kind of Insect can fly up to 35 miles per hour? \_\_\_\_\_

5) Are Whip spiders venomous? \_\_\_\_\_

6) How many Ball Pythons can you find? \_\_\_\_\_

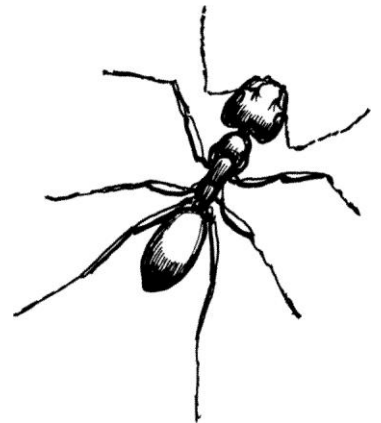


7) Name a difference between a Tortoise and a Turtle:  
\_\_\_\_\_



8) I have 8 legs and may eat a bird when I'm full grown! What am I?  
\_\_\_\_\_

9) How many ant graveyards can you find? \_\_\_\_\_



10) How do Madagacar Hissing Cockroaches hiss? \_\_\_\_\_

11) Does Myrtle Turtle have a hard or soft shell? \_\_\_\_\_

Thank you for visiting, we hope you had fun!

[www.BugMuseum.com](http://www.BugMuseum.com)